



ALASKA DIVISION OF HOMELAND SECURITY & EMERGENCY MANAGEMENT



Daily Situation Report 26-013 • January 13, 2026

Toll-Free 1.800.478.2337

Anchorage Area 907.428.7000

SEOC 907.428.7100

<u>SEOC Preparedness Level</u> Level 2-Heightened Awareness	http://ready.alaska.gov	<u>Alaska Military Installation Force</u> <u>Protection Level:</u> FPCON Bravo
<u>NTAS Bulletin</u> There are no current advisories https://www.dhs.gov/national-terrorism-advisory-system	<u>Maritime Security (MARSEC)</u> Level:1 Minimum Appropriate Security Measures	

(Significant changes from previous situation reports are red.)

Significant Issues: No new changes

2026 January Southeast Winter Storm Disaster

Juneau – SEOC Division supervisor remains deployed in Juneau, coordinating with CBJ and T&H leadership to ensure community needs are met given increased snow, rain and avalanche concerns.

Quinhagak Power Disruption

The SEOC is working with community leaders to address life-safety concerns in the community during a significant cold weather period and a power disruption. .

Joint Preliminary Damage Assessment: Napaskiak and Mat-Su Borough

DHS&EM Operations and Disaster Recovery personnel will be engaged with FEMA to establish the scope of damage in the two above-mentioned areas throughout the next two weeks.

Division of Homeland Security and Emergency Management Public Information:

For current press releases, see: <https://ready.alaska.gov/PublicInformation/PressReleases>

Department of Health (DOH):

For current information, see: <https://health.alaska.gov/en/>

Travel Alerts and Conditions:

Juneau: Thane Road will be closing at the avalanche gates today 1/13/26 at noon

For current driving conditions, dial 511 or visit: <https://511.alaska.gov/>

Barry Arm Landslide / Tsunami Risk:

For the latest information on the Barry Arm Landslide and Tsunami risk, click here:

<https://dggs.alaska.gov/hazards/barry-arm-landslide.html>

Earthquakes:

United States Geological Service (USGS) Earthquake Information:

<https://www.usgs.gov/programs/earthquake-hazards>

National Tsunami Warning Center: <https://tsunami.gov/>

Alaska Volcanoes:

Great Sitkin Alert Level: **Watch** and Aviation Color Code: **Orange**

Shishaldin Alert Level: **Advisory** and Aviation Color Code: **Yellow**

For Alaska Volcano updates, go to: <https://www.avo.alaska.edu/>

Air Quality Index (AQI) Advisories:

For the most up-to-date Air Quality Index Advisories:

<https://dec.alaska.gov/Applications/Air/airtoolsweb/Advisories>

Spills of Oil and Hazardous Substances:

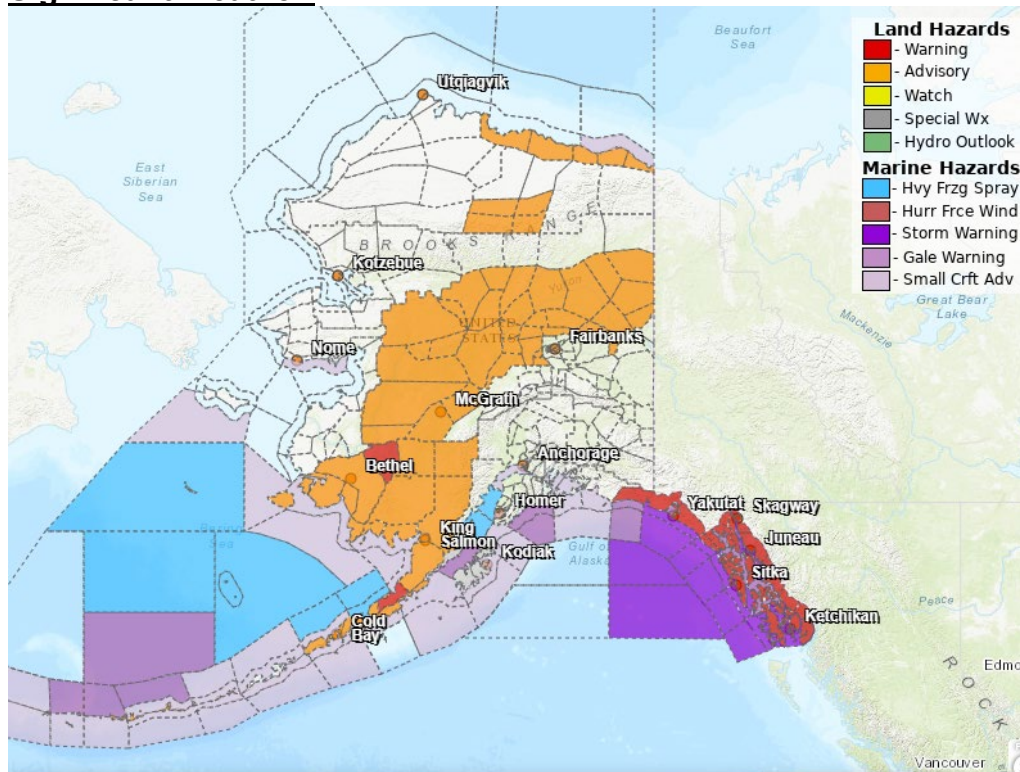
The Alaska Division of Environmental Conservation (ADEC) Spill Prevention and Response page is located at: <https://dec.alaska.gov/spar/ppr/spill-information/response/>

Alaska Cyber Security Information:

State Employees may sign up for cybersecurity notifications and alerts at:

<https://oit-int.alaska.gov/security/>

Significant Weather:



Civil Emergency Message-City and Borough of Juneau

AVALANCHE EVACUATION ADVISORY: more information online at juneau.org.

Special Weather Statements:

City & Borough of Sitka; Admiralty Island; Petersburg Borough; Western Kupreanof &

Kuiu Island; Prince of Wales Island; City and Borough of Wrangell; Ketchikan Gateway Borough; City of Hyder:

City & Borough of Yakutat; Municipality of Skagway; Haines Borough & Klukwan; Glacier Bay; Eastern Chichagof Island; Cape Fairweather to Lisianski Strait; Admiralty Island; City & Borough of Juneau:
ANOTHER PERIOD OF HEAVY RAIN FOR TUESDAY INTO TUESDAY NIGHT

Kodiak Island Northeast; Kodiak Island Southwest:
SNOW & AREAS OF BLOWING SNOW LATE TONIGHT THROUGH TUESDAY

Winter Weather Advisory's:

Central Aleutians
IN EFFECT FROM 9 AM WEDNESDAY TO 9 AM THURSDAY

Eastern Beaufort Sea Coast
IN EFFECT UNTIL 6 PM THIS EVENING

Extreme Cold Warning:

Kuskokwim Valley West, Central Alaska Peninsula
IN EFFECT UNTIL 6 PM THURSDAY

Cold Weather Advisory's:

Upper Koyukuk Valley; Dalton Highway Summits; Yukon Flats; White Mountains and High Terrain South of the Yukon River; Central Interior

Nenana
EFFECT UNTIL 3 PM THIS AFTERNOON

Central Beaufort Sea Coast; Eastern Beaufort Sea Coast
EFFECT UNTIL 3 PM WEDNESDAY

High Wind Warnings:

Glacier Bay; Eastern Chichagof Island; Cape Fairweather to Lisianski Strait; Admiralty Island; City and Borough of Juneau

City and Borough of Sitka; Petersburg Borough; Western Kupreanof and Kuiu Island; Prince of Wales Island; City and Borough of Wrangell; Ketchikan Gateway Borough; Annette Island
FROM 6 PM THIS EVENING TO 9 AM WEDNESDAY

City and Borough of Yakutat; Municipality of Skagway; Haines Borough and Klukwan
FROM 9 PM THIS EVENING TO 9 PM WEDNESDAY

Winter Storm Warning:

Municipality of Skagway
FROM NOON TODAY TO 9 AM WEDNESDAY

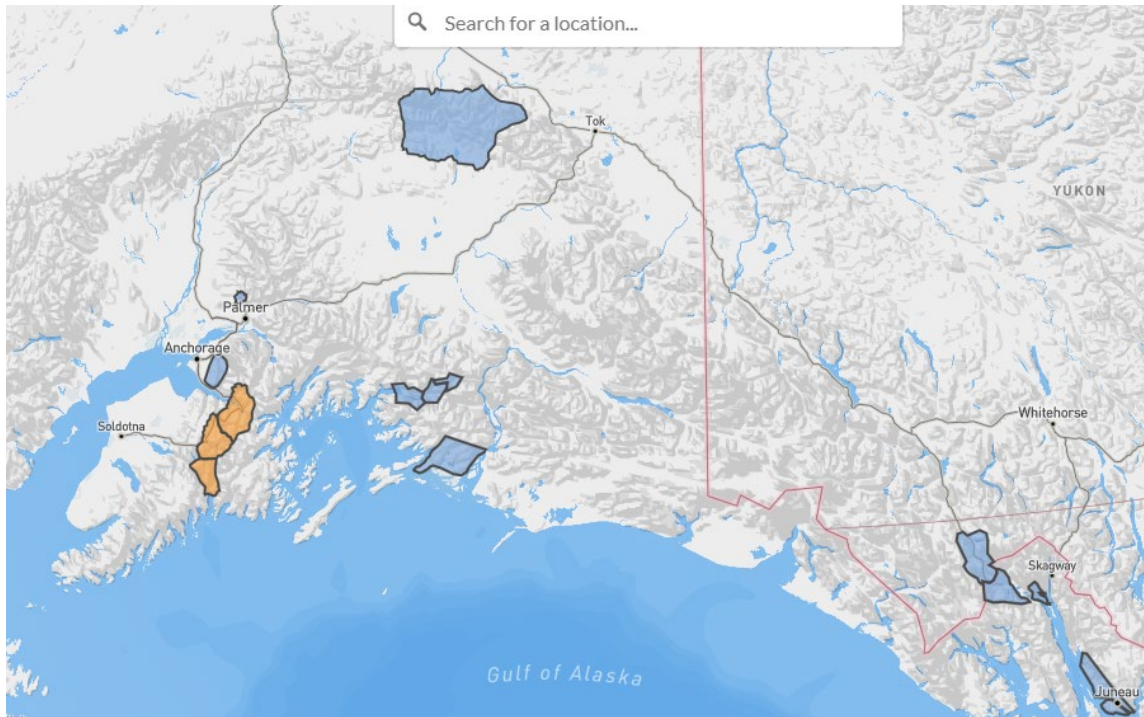
Flood Advisories:

City and Borough of Juneau
IN EFFECT UNTIL 9 AM WEDNESDAY

Ketchikan Gateway Borough
IN EFFECT UNTIL 6 PM AKST THIS EVENING

For more information, go to <https://www.weather.gov/arh>

Avalanche Conditions:



Hatcher Pass – Moderate above 3,500'; Moderate below 2,500'; Low below 2,500'

Chugach State Park – Special Avalanche Bulletin available

Turnagain Pass and Girdwood – Considerable above 2,500'; Considerable above 1,000'; Considerable below 1,000';

Summit Lake – Considerable above 2,500'; Considerable above 1,000'; Considerable below 1,000';

Seward and Lost Lake Considerable above 2,500'; Considerable above 1,000'; Considerable below 1,000';

Valdez:

Maritime – Considerable at all elevations

Intermountain – Considerable at all elevations

Continental – Considerable at all elevations

Haines: Chilkat Pass, Transitional, Lutak – High at all elevations

Juneau: Douglas Island – Considerable at all elevations

For more information and the most current avalanche conditions, go to <https://alaskasnow.org>

The Next Situation Report will be on **January 14, 2026**. A significant change in situation or threat level will prompt an interim report. This report is posted on the internet at <https://ready.alaska.gov/sitrep>.

To register for email distribution, go to: <http://list.state.ak.us/mailman/listinfo/dhsem.situation.report>. Direct questions regarding this report to the SEOC at 907-428-7100 or seoc@alaska.gov.